

# Dynabrade Systems & Solutions

For Abrasive Belt Tools – Suggested Tool/Accessory Combinations



| TOOL  | ABRASIVE   | ACCESSORIES  |  |  |
|---|--|--|--|--|
| <b>Dynafile®</b><br>Model 14000<br>Page 10<br>               | <b>24" Long Belts</b><br>1/8", 1/4", 1/2"<br>Widths Page 270     | <b>Bench Mounts</b><br>80020, 80015<br>Page 255<br>               | <b>Popular Contact Arms</b> Page 11<br>11213, 11216, 11218, 11219, 11231<br> |  |
| <b>Dynafile® II</b><br>Model 40320<br>Page 13<br>            | <b>18" Long Belts</b><br>1/4", 1/2", 3/4"<br>Widths Page 270     | <b>Bench Mounts</b><br>80021, 80015<br>Page 255<br>               | <b>Popular Contact Arms</b><br>11203, 11204, 11206<br>Page 16<br>           | <b>Collet</b> Page 51<br><b>Assembly For Die Grinder Use</b><br>50010<br> |
| <b>Mini-Dynafile® II</b><br>Model 15003<br>Page 18<br>       | <b>12" Long Belts</b><br>1/4", 1/2" Widths<br>Page 270           | <b>Popular Contact Arms</b> Page 19<br>15026, 15028, 15030<br>   |  | <b>Rubber Drive Wheel</b><br>40378<br>Page 18<br>                         |
| <b>Dynafile® III</b><br>Model 15300<br>Page 20<br>           | <b>18" Long Belts</b><br>1/4", 1/2", 3/4", 1"<br>Widths Page 270 | <b>Bench Mounts</b><br>80021, 80015<br>Page 255<br>               | <b>Popular Contact Arms</b> Page 23<br>15321, 15326, 15350, 15357<br>       |  |
| <b>Dynafile® III</b><br>Model 15420<br>Page 21<br>          | <b>24" Long Belts</b><br>1/4", 1/2" Widths<br>Page 270           | <b>Bench Mounts</b><br>80021, 80015<br>Page 255<br>              | <b>Popular Contact Arms</b> Page 23<br>15321, 15326, 15350, 15357<br>      |  |
| <b>Dynabelter®</b><br>Model 11476<br>Page 24<br>           | <b>30" Long Belts</b><br>1" Widths<br>Page 272                   | <b>Contact Arm</b><br>11717<br>Page 26<br>                      | <b>Adapter</b><br>11739<br>Page 25<br>                                    | <b>Extenders</b> Page 25<br>11679, 11657, 11656<br>                     |
| <b>Electric Dynafile® II</b><br>Model 40610<br>Page 15<br> | <b>18" Long Belts</b><br>1/4", 1/2", 3/4"<br>Widths Page 270     | <b>Popular Contact Arms</b> Page 16<br>11203, 11204, 11206<br> |  | <b>Extension Adapter</b><br>40078<br>Page 16<br>                        |

## ESSENTIAL ACCESSORIES

**Metal Capture Downdraft Station**  
 64350 Page 208



**Air Lube (10W/NR)**  
 95842 Page 254



**Dynüba 100**  
 60005 Page 254



**Dynüba 26**  
 60020 Page 254



**Dynaswivel®**  
 94300 Page 223



**Coupler/Plug Assemblies**  
 95676, 97572 Page 228



**Filter-Regulator-Lubricator**  
 10681 Page 224



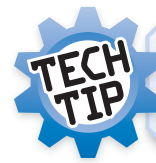
**Air Hose Assemblies**  
 94863, 94852, 94892 Page 225



# Dynafile® Contact Arms

## 4" to 14" Workable Reach

- All rubber Contact Wheels are 70 durometer, unless noted.




To maximize the life of 1/4" bearings or smaller, lower the operating air pressure to 45 PSIG (3.1 Bar) and run the motor at a lower RPM.

| Part Number  | Comments   | Belt Size (W x L)  | Contact Wheel Assembly (includes bearing and shaft)   | Platen Pad (see page 29)    |
|--|--|--|---|-----------------------------|
| 11178, 11179<br><br>11257: Custom-made. Specify length and contact wheel. | <ul style="list-style-type: none"> <li>• <b>45 PSIG maximum</b></li> <li>• Up to 32" reach</li> <li>• Enter slots as narrow as 3/8"</li> <li>• Deburr 1/2" to 1" tubing</li> </ul> | 11178:<br>1/2" x 34"<br>(9" reach)<br>11179:<br>1/2" x 34"<br>(9" reach) | 11178:<br>11068 Wheel<br>(5/16" dia. steel)<br>11179:<br>11078 Wheel<br>(5/8" dia. rubber)  | None                        |
| 11212<br>   | <ul style="list-style-type: none"> <li>• <b>45 PSIG maximum</b></li> <li>• File round openings as small as 7/16"</li> </ul>  | 1/4" x 24"   | 11066<br>5/16" dia. x 1/8" wide, steel  | 11034<br>1/4" wide;<br>Thin |
| 11213<br>   | <ul style="list-style-type: none"> <li>• <b>45 PSIG maximum</b></li> <li>• See 11239 for heavy-duty version</li> </ul>   | 1/2" x 24"   | 11068<br>5/16" dia. x 3/8" wide, steel  | 11027<br>1/2" wide;<br>Thin |
| 11214<br>   | <ul style="list-style-type: none"> <li>• <b>45 PSIG maximum</b></li> <li>• Work on contact wheel or platen pad</li> </ul>  | 1/2" x 24"   | 11070<br>7/16" dia. x 3/8" wide, rubber   | 11025<br>1/2" wide;<br>Soft |
| 11215<br>   | <ul style="list-style-type: none"> <li>• Enter 1/2" x 1/2" openings</li> </ul>   | 1/4" x 24"   | 11072<br>7/16" dia. x 1/8" wide, brass  | 11034<br>1/4" wide;<br>Thin |
| 11216<br>  | <ul style="list-style-type: none"> <li>• Enter 5/16" x 3/4" openings</li> </ul>  | 1/4" x 24"   | 11074<br>5/8" dia. x 1/8" wide, rubber  | 11032<br>1/4" wide;<br>Soft |
| 11217<br>   | <ul style="list-style-type: none"> <li>• Enter channels as narrow as 9/16"</li> </ul>  | 1/2" x 24"   | 11076<br>7/16" dia. x 3/8" wide, steel  | 11027<br>1/2" wide;<br>Thin |
| 11218<br>   | <ul style="list-style-type: none"> <li>• <b>Standard on Model 14000</b></li> <li>• See 11228 for heavy-duty version</li> </ul>   | 1/2" x 24"   | 11078<br>5/8" dia. x 3/8" wide, rubber  | 11025<br>1/2" wide;<br>Soft |
| 11219, 11252<br>  | <ul style="list-style-type: none"> <li>• No platen due to offset design</li> <li>• Ideal for slack polishing; also grinding radiuses</li> </ul>                                    | 1/4" or<br>1/2" x 24"  | 11219: 11080 Wheel,<br>1" dia. x 3/8" wide, 90 duro<br>11252: 11093 Wheel,<br>1" dia. x 3/8" wide, 40 duro<br>(Both wheels radiused rubber) | None                        |
| 11228<br>   | <ul style="list-style-type: none"> <li>• Heavy-duty steel</li> <li>• Optional 11028 Steel Platen available for grinding</li> </ul>   | 1/2" x 24"   | 11078<br>5/8" dia. x 3/8" wide, rubber  | 11025<br>1/2" wide;<br>Soft |
| 11231<br>   | <ul style="list-style-type: none"> <li>• See 11243 for heavy-duty version</li> </ul>   | 1/2" x 24"   | 11084<br>3/4" dia. x 1/2" wide, rubber  | 11135<br>1/2" wide;<br>Hard |
| 11232<br>"V" Shaped Wheel<br>   | <ul style="list-style-type: none"> <li>• For 1/8" wide belts</li> <li>• No platen due to offset design</li> <li>• Grind corners, strap polish</li> </ul>                           | 1/8" or 1/4"<br>x 24"  | 11086<br>1" dia. x 3/8" wide, 90 duro,<br>tapered rubber  | None                        |
| 11234<br>   | <ul style="list-style-type: none"> <li>• Deburrs both edges of workpiece simultaneously</li> <li>• Contact wheels adjust for material 1/8" to 5/8" thick</li> </ul>                | 1/2" x 34"   | 11080 (two)<br>1" dia. x 3/8" wide, rubber  | None                        |


# Dynafile® Contact Arms

## 4" to 14" Workable Reach

- All rubber Contact Wheels are 70 durometer, unless noted.



**See more information  
on Contact Wheels and  
Assemblies on page 256!**



| Part Number   | Comments   | Belt Size (W x L)                            | Contact Wheel Assembly (includes bearing and shaft)  | Platen Pad (see page 29)    |
|---|--|--|--|-----------------------------|
| <b>11237, 11238</b><br>Turbine Blade Arm<br> | <ul style="list-style-type: none"> <li>• <b>45 PSIG maximum</b></li> <li>• For use on turbine blades</li> <li>• Reach areas as small as 5/16" wide</li> <li>• 1-1/2" strap polish area</li> </ul>      | 11237:<br>1/4" x 24"<br>11238:<br>1/2" x 24" | 11237: 5/16" dia. x 1/8" wide, steel wheel<br>11238: 1/4" dia. x 3/8" wide, steel (Consists of three 11051 Bearings) | None                        |
| <b>11239</b><br>                             | <ul style="list-style-type: none"> <li>• <b>45 PSIG maximum</b></li> <li>• Heavy-duty steel</li> <li>• Grind in narrow areas</li> </ul>  | 1/2" x 24"                                   | 11068<br>5/16" dia. x 3/8" wide, steel   | 11027<br>1/2" wide;<br>Thin |
| <b>11240</b><br>                             | <ul style="list-style-type: none"> <li>• 9" workable reach</li> <li>• Optional 11024 Steel Platen Pad available</li> </ul>   | 1/2" x 34"                                   | 11078<br>5/8" dia. x 3/8" wide, rubber   | 11025<br>1/2" wide;<br>Soft |
| <b>11241</b><br>                             | <ul style="list-style-type: none"> <li>• 9" workable reach</li> </ul>  | 1/4" x 34"                                   | 11074<br>5/8" dia. x 1/8" wide, rubber   | 11032<br>1/4" wide;<br>Soft |
| <b>11243</b><br>                             | <ul style="list-style-type: none"> <li>• Heavy-duty steel</li> <li>• Grind over contact wheel or platen pad</li> </ul>   | 1/2" x 24"                                   | 11084<br>3/4" dia. x 1/2" wide, rubber   | 11135<br>1/2" wide;<br>Hard |
| <b>11244, 11245</b><br>                      | <ul style="list-style-type: none"> <li>• 14" workable reach</li> <li>• Optional 11024 Steel Platen Pad available</li> </ul>  | 11244:<br>1/2" x 44"<br>11245:<br>1/4" x 44" | 11078<br>5/8" dia. x 3/8" wide, rubber   | 11025<br>1/2" wide;<br>Soft |
| <b>11253, 11254</b><br>Big Wheel Arm<br>   | <ul style="list-style-type: none"> <li>• Grinds and polishes deep slots or narrow grooves</li> </ul>   | 1/4" to 1/2" x 34"                           | 1/4" to 1/2" wide wheels, 2-1/8" to 4-3/4" diameter (specify size)   |                             |
| <b>11255</b><br>Cross Bow Arm<br>          | <ul style="list-style-type: none"> <li>• I.D. polish, deburr or ream with one 180° wrist turn</li> <li>• Deburr leading radius of 1" to 4" round openings</li> <li>• Great for pipe fitters</li> </ul> | 1/2" x 34"                                   | 11078<br>5/8" dia. x 3/8" wide, rubber   | None                        |
| <b>11258</b><br>Stroke Sander Arm<br>      | <ul style="list-style-type: none"> <li>• Blend stainless steel</li> </ul>  | 1/2" x 24"                                   | 11078<br>5/8" dia. x 3/8" wide, rubber<br>11076<br>7/16" dia. x 3/8" wide, steel                                     | 11025<br>1/2" wide;<br>Soft |
| <b>11261</b><br>"The Banana Arm"<br>       | <ul style="list-style-type: none"> <li>• For in-line scratch pattern</li> </ul>  | 1/2" x 24"                                   | 11078<br>5/8" dia. x 3/8" wide, rubber   | 11132<br>1/2" wide          |
| <b>11262</b><br>Offset Arm<br>             | <ul style="list-style-type: none"> <li>• For flat grinding using platen at or near corners and edges of large radiuses</li> <li>• Contact wheel is offset to prevent gouging</li> </ul>                | 1/2" x 24"                                   | 11078<br>5/8" dia. x 3/8" wide, rubber   | 11026<br>1/2" wide;<br>Hard |
| <b>11297</b><br>Guide-Cut Arm<br>          | <ul style="list-style-type: none"> <li>• Guide wheels prevent undercutting</li> <li>• Removes raised material within .020" or less</li> <li>• Use 60 to 80 grit belts</li> </ul>                       | 1/2" x 24"<br>60 to 80 grit                  | 11090<br>5/8" dia. x 3/8" wide, rubber   | None                        |

# Mini-Dynaflex® II Contact Arms

## 3" Workable Reach; Exclusive to Mini-Dynaflex® II

- All rubber Contact Wheels are 70 durometer, unless noted.

| Part Number  | Comments   | Belt Size (W x L)  | Contact Wheel Assembly (includes bearing and shaft)  | Platen Pad (see page 29) |
|--------------|--|--------------------|--|--------------------------|
| 15025, 15028 |  <ul style="list-style-type: none"> <li>No platen due to offset design</li> <li>Grind radiuses</li> <li>Offset for slack polishing</li> </ul> | 1/4" or 1/2" x 12" | 15025: 11093 Wheel, 1" dia. x 3/8" wide, 40 duro rubber<br>15028: 11080 Wheel, 1" dia. x 3/8" wide, 90 duro rubber                 | None                     |
| 15026        |  <ul style="list-style-type: none"> <li><b>Standard on Model 15003</b></li> <li>Grind corners, enter grooves</li> </ul>                       | 1/2" x 12"         | 11078<br>5/8" dia. x 3/8" wide, rubber   | 11026<br>1/2" wide; Hard |
| 15027        |  <ul style="list-style-type: none"> <li>Sand on both sides of arm</li> <li>Enter confined areas as small as 1/4"</li> </ul>                   | 1/4" x 12"         | 11074<br>5/8" dia. x 1/8" wide, rubber   | 11033<br>1/4" wide; Hard |
| 15029        |  <ul style="list-style-type: none"> <li>Grind corners, enter grooves and strap polish</li> </ul>   | 1/8" x 12"         | 11086<br>1" dia. x 3/8" wide, tapered rubber, 90 duro  | None                     |
| 15030        |  <ul style="list-style-type: none"> <li><b>45 PSIG maximum</b></li> <li>Enter channels as narrow as 7/16"</li> </ul>                        | 1/2" x 12"         | 11068<br>5/16" dia. x 3/8" wide, steel   | 11027<br>1/2" wide; Thin |
| 15031        |  <ul style="list-style-type: none"> <li><b>45 PSIG maximum</b></li> <li>Work on contact wheel or platen pad</li> </ul>                      | 1/2" x 13"         | 11070<br>7/16" dia. x 3/8" wide, rubber  | 11027<br>1/2" wide; Thin |
| 15032        |  <ul style="list-style-type: none"> <li><b>45 PSIG maximum</b></li> <li>Grind, blend and polish turbine blades</li> </ul>                   | 1/2" x 12"         | 11332<br>1/4" dia. x 3/8" wide, steel  | None                     |
| 15033        |  <ul style="list-style-type: none"> <li><b>45 PSIG maximum</b></li> <li>Grind, polish turbine blades and other contours</li> </ul>          | 1/2" x 12"         | 11342<br>5/16" dia. x 3/8" wide, rubber  | None                     |
| 15034        |  <ul style="list-style-type: none"> <li>Unique offset design</li> <li>Strap polishing is easy with this arm</li> </ul>                      | 1/4" or 1/2" x 13" | 11204: 11080 Wheel, 1" dia. x 3/8" wide, 90 duro<br>11305: 11093 Wheel, 1" dia. x 3/8" wide, 40 duro (Both wheels radiused rubber) | None                     |
| 15035        |  <ul style="list-style-type: none"> <li><b>Standard on Model 15013</b></li> <li>Grind over contact wheel or platen</li> </ul>               | 1/2" x 13"         | 11078<br>5/8" dia. x 3/8" wide, rubber   | 11025<br>1/2" wide; Soft |



# Dynaflex® II Contact Arms

## For Air and Electric Models - 4" to 17" Workable Reach



Optional 40078 Adapter allows use of 24" long belts. Extends reach to 7" when used with standard contact arms

- All rubber Contact Wheels are 70 durometer, unless noted.

| Part Number   | Comments   | Belt Size (W x L)                                   | Contact Wheel Assembly (includes bearing and shaft)  | Platen Pad (see page 29)                 |
|---|--|---|--|--|
| 11200     | <ul style="list-style-type: none"> <li>• Work on broad areas</li> <li>• Leave in-line scratch</li> <li>• Blend spot welds</li> </ul>   | 1/2" x 18"  | 11088<br>5/8" dia. x 3/8" wide, rubber   | 11025<br>1/2" wide;<br>Soft              |
| 11201     | <ul style="list-style-type: none"> <li>• <b>45 PSIG maximum</b></li> <li>• Enter channels as small as 7/16"</li> </ul>   | 1/2" x 18"  | 11068<br>5/16" dia. x 3/8" wide, steel   | 11027<br>1/2" wide;<br>Thin              |
| 11202     | <ul style="list-style-type: none"> <li>• Enter 5/16" x 3/4" openings</li> </ul>  | 1/4" x 18"  | 11074<br>5/8" dia. x 1/8" wide, rubber   | 11032<br>1/4" wide;<br>Soft              |
| 11203 Order 11312 for heavy-duty version.       | <ul style="list-style-type: none"> <li>• <b>Standard on Models 40335, 40610 and 40615</b></li> <li>• Grind over contact wheel or platen</li> </ul>   | 1/2" x 18"  | 11078<br>5/8" dia. x 3/8" wide, rubber   | 11025<br>1/2" wide;<br>Soft              |
| 11204, 11305                                    | <ul style="list-style-type: none"> <li>• Unique offset design</li> <li>• Strap polishing is easy with this arm</li> </ul>  | 1/8", 1/4" or 1/2" x 18"                            | 11204: 11080 Wheel, 1" dia. x 3/8" wide, 90 duro<br>11305: 11093 Wheel, 1" dia. x 3/8" wide, 40 duro (Both wheels radiused rubber)   | None                                     |
| 11206 Order 11326 for heavy-duty version.   | <ul style="list-style-type: none"> <li>• <b>Standard on Models 15400, 40320, 40330 and 40381</b></li> </ul>  | 5/8" or 3/4" x 18"                                  | 11282<br>3/4" dia. x 5/8" wide, rubber   | 11109<br>3/4" wide;<br>Hard              |
| 11220, 11300, 11301, 11341                  | <ul style="list-style-type: none"> <li>• <b>45 PSIG maximum</b></li> <li>• Offset design and miniature contact wheels</li> <li>• 2" strap polish in offset area; polish turbine blades and other contours</li> </ul> | 11220: 5/8" or 3/4" x 18"<br>All Others: 1/2" x 18" | 11220: 11352<br>5/16" dia. x 5/8" wide, steel<br><br>11300: 11332<br>1/4" dia. x 3/8" wide, steel<br><br>11301: 11068<br>5/16" dia. x 3/8" wide, steel<br><br>11341: 11342<br>5/16" dia. x 3/8" wide, rubber | None<br><br>None<br><br>None<br><br>None |
| 11280                                       | <ul style="list-style-type: none"> <li>• Grind corners, enter grooves, strap polish</li> <li>• "V" shape wheel</li> </ul>  | 1/8" or 1/4" x 18"                                  | 11086<br>1" dia. x 3/8" wide, tapered rubber, 90 duro  | None                                     |
| 11286                                       | <ul style="list-style-type: none"> <li>• Optional 11024 Steel Platen Pad available</li> <li>• 6-3/4" workable reach</li> </ul>   | 1/2" x 24"  | 11078<br>5/8" dia. x 3/8" wide, rubber   | 11025<br>1/2" wide;<br>Soft              |
| 11287                                       | <ul style="list-style-type: none"> <li>• <b>Standard on Model 15401 and 40326</b></li> <li>• Grind on wheel or platen</li> <li>• 5-1/4" reach</li> </ul>   | 5/8" or 3/4" x 20-1/2"                              | 11282<br>3/4" x 5/8" wide, rubber  | 11109<br>3/4" wide;<br>Hard              |

# Dynafile® II Contact Arms

## For Air and Electric Models - 4" to 17" Workable Reach



Optional 40078 Adapter allows use of 24" long belts. Extends reach to 7" when used with standard contact arms

- All rubber Contact Wheels are 70 durometer, unless noted.

| Part Number   | Comments   | Belt Size (W x L)           | Contact Wheel Assembly (includes bearing and shaft) | Platen Pad (see page 29) |
|---|--|-----------------------------|---|--------------------------|
| <b>11304</b><br>"The Banana Arm"<br>USA Government<br>National Stock No. 5130012769560  |  <ul style="list-style-type: none"> <li>Work on broad areas; levels in-line scratch; blend stainless</li> </ul> | 1/2" x 18"                  | 11078<br>5/8" dia. x 3/8" wide, rubber              | 11132<br>1/2" wide; Hard |
| <b>11312</b><br>                | <ul style="list-style-type: none"> <li>Heavy-duty steel</li> <li>Grind over contact wheel or platen</li> </ul>   | 1/2" x 18"                  | 11078<br>5/8" dia. x 3/8" wide, rubber              | 11025<br>1/2" wide; Soft |
| <b>11314</b><br>                | <ul style="list-style-type: none"> <li><b>45 PSIG maximum</b></li> <li>File round openings as small as 7/16"</li> </ul>  | 1/4" x 18"                  | 11066<br>5/16" dia. x 1/8" wide, steel              | 11034<br>1/4" wide; Soft |
| <b>11320</b><br>Offset Arm<br>  | <ul style="list-style-type: none"> <li>For flat grinding using platen at or near corners and edges of large radius round</li> <li>Contact wheel is offset to prevent gouging</li> </ul>          | 1/2" x 18"                  | 5/8" dia. x 3/8" wide, rubber                       | 11026<br>1/2" wide; Hard |
| <b>11321</b><br>                | <ul style="list-style-type: none"> <li><b>45 PSIG maximum</b></li> <li>Work on contact wheel or platen pad</li> </ul>  | 1/2" x 18"                  | 11070<br>7/16" dia. x 3/8" wide, rubber             | 11025<br>1/2" wide; Soft |
| <b>11322</b><br>   | <ul style="list-style-type: none"> <li>Guide-cut</li> <li>Removes raised material within .020" or less without undercutting</li> </ul>   | 1/2" x 18"<br>60 to 80 grit | 11090<br>5/8" dia. x 3/8" wide, rubber              | None                     |
| <b>11325</b><br>   | <ul style="list-style-type: none"> <li>For flat grinding and heavy stock removal</li> </ul>  | 1/2" x 18"                  | 11078<br>5/8" dia. x 3/8" wide, rubber              | 11024<br>Steel Platen    |
| <b>11329</b><br>   | <ul style="list-style-type: none"> <li>Extra length arm</li> <li>17" workable reach</li> </ul>   | 1/2" x 44"                  | 11078<br>5/8" dia. x 3/8" wide, rubber              | 11025<br>1/2" wide; Soft |
| <b>11330</b><br>            | <ul style="list-style-type: none"> <li>Enter 1/2" x 1/2" openings</li> </ul>   | 1/4" x 18"                  | 11072<br>7/16" dia. x 1/8" wide, brass              | 11034<br>1/4" wide; Thin |
| <b>11337</b><br>            | <ul style="list-style-type: none"> <li>Enter channels as narrow as 9/16"</li> </ul>  | 1/2" x 18"                  | 11076<br>7/16" dia. x 3/8" wide, steel              | 11027<br>1/2" wide; Thin |
| <b>11350</b><br>   | <ul style="list-style-type: none"> <li><b>45 PSIG maximum</b></li> <li>Excellent for cleaning oxide off electrical bus bars</li> <li>Arm has a 12" workable reach</li> </ul>                     | 3/4" x 34"                  | 11352<br>5/16" dia. x 5/8" wide, steel              | Optional<br>3/4" wide    |
| <b>11360</b><br>   | <ul style="list-style-type: none"> <li>Unique offset design</li> <li>Grind over contact wheels or strap polish</li> </ul>  | 1/2" x 18"                  | 11078<br>5/8" dia. x 3/8" wide, rubber              | None                     |

# Dynaflex® III Contact Arms

## 4" to 6-3/4" Workable Reach

- All rubber Contact Wheels are 70 durometer, unless noted.

| Part Number  | Comments   | Belt Size (W x L)        | Contact Wheel Assembly (includes bearing and shaft)  | Platen Pad (see page 29)    |
|--|--|--------------------------|--|-----------------------------|
| <b>11200</b><br>  | <ul style="list-style-type: none"> <li>• Work on broad areas</li> <li>• Leave in-line scratch</li> <li>• Blend stainless</li> </ul>  | 1/2" x 18"               | 11088<br>5/8" dia. x 3/8" wide, rubber   | 11025<br>1/2" wide;<br>Soft |
| <b>11203</b><br>  | <ul style="list-style-type: none"> <li>• <b>Standard on Models 40335 and 40610</b></li> <li>• Grind over contact wheel or platen</li> <li>• Order 11312 for heavy-duty, or 11325 for steel platen version</li> </ul> | 1/2" x 18"               | 11078<br>5/8" dia. x 3/8" wide, rubber   | 11025<br>1/2" wide;<br>Soft |
| <b>11204, 11305</b><br>   | <ul style="list-style-type: none"> <li>• Unique offset design</li> <li>• Strap polishing is easy with this arm</li> </ul>  | 1/8", 1/4" or 1/2" x 18" | 11204: 11080 Wheel, 1" dia. x 3/8" wide, 90 duro, radiused rubber<br><br>11305: 11093 Wheel, 1" dia. x 3/8" wide, 40 duro, radiused rubber | None                        |
| <b>11206</b><br>   | <ul style="list-style-type: none"> <li>• <b>Standard on Models 15400, 40320 and 40330</b></li> <li>• Order 11326 for heavy-duty steel construction version</li> </ul>  | 5/8" or 3/4" x 18"       | 11282<br>3/4" dia. x 5/8" wide, rubber   | 11109<br>3/4" wide;<br>Hard |
| <b>11286</b><br>  | <ul style="list-style-type: none"> <li>• Optional 11024 Steel Platen Pad available</li> <li>• 6-3/4" workable reach</li> </ul>   | 1/2" x 24"               | 11078<br>5/8" dia. x 3/8" wide, rubber   | 11025<br>1/2" wide;<br>Soft |
| <b>11287</b><br>  | <ul style="list-style-type: none"> <li>• <b>Standard on Models 15401 and 40326</b></li> <li>• Grind on wheel or platen</li> <li>• 5-1/4" reach</li> </ul>  | 5/8" or 3/4" x 20-1/2"   | 11282<br>3/4" dia. x 5/8" wide, rubber   | 11109<br>3/4" wide;<br>Hard |
| <b>11320</b><br>Offset Arm<br>  | <ul style="list-style-type: none"> <li>• For flat grinding using platen at or near corners and edges of large radius round</li> <li>• Contact wheel is offset to prevent gouging bus bars</li> </ul>                 | 1/2" x 18"               | 11078<br>5/8" dia. x 3/8" wide, rubber   | 11026<br>1/2" wide;<br>Hard |
| <b>11702</b><br> <p>For use on 15420 Dynaflex® III only (see page 21)</p> | <ul style="list-style-type: none"> <li>• Perfectly designed to reach up to 2" in a channel</li> <li>• Great for use with scalloped edge abrasives, blending weld seams</li> </ul>                                    | 1/4" or 1/2" x 24"       | 11638<br>70 durometer<br>4" dia. x 1/2" wide, radiused rubber  | None                        |

# Dynafile® III Contact Arms

## 4" to 6-3/4" Workable Reach

• All rubber Contact Wheels are 70 durometer, unless noted.

| Part Number   | Comments   | Belt Size (W x L) | Contact Wheel Assembly (includes bearing and shaft)            | Platen Pad (see page 29)  |
|---|--|-------------------|--|---------------------------|
| <b>15321</b><br>   | <ul style="list-style-type: none"> <li>For flat grinding using platen pad</li> </ul>   | 1" x 18"          | 15320<br>3/4" dia. x 7/8" wide, rubber                         | 15323<br>1" wide;<br>Soft |
| <b>15326</b><br>   | <ul style="list-style-type: none"> <li>Allows for longer reach</li> <li>Grind using platen pad</li> </ul>  | 1" x 24"          | 15320<br>3/4" dia. x 7/8" wide, rubber                         | 15323<br>1" wide;<br>Soft |
| <b>15350</b><br>   | <ul style="list-style-type: none"> <li><b>Standard on Model 15300</b></li> <li>Reversible arm - arm can be flipped to allow for platen sanding or strap polishing</li> </ul> | 1" x 18"          | 15349<br>90 durometer<br>2" dia. x 1" wide, rubber             | 15323<br>1" wide;<br>Soft |
| <b>15351</b><br>  | <ul style="list-style-type: none"> <li>Reversible arm - arm can be flipped to allow for platen sanding or strap polishing</li> </ul>   | 1" x 18"          | 15348<br>70 durometer<br>2" dia. x 1" wide, rubber             | 15323<br>1" wide;<br>Soft |
| <b>15356</b><br> | <ul style="list-style-type: none"> <li>Reversible arm - arm can be flipped to allow for platen sanding or strap polishing</li> </ul>   | 1" x 18"          | 15346<br>40 durometer<br>2" dia. x 5/8" wide, rubber           | 15323<br>1" wide;<br>Soft |
| <b>15357</b><br> | <ul style="list-style-type: none"> <li>Reversible arm - arm can be flipped to allow for platen sanding or strap polishing</li> <li>"V" shape wheel</li> </ul>                | 1" x 18"          | 15347<br>2" dia. x 1" wide, rubber                             | 15323<br>1" wide;<br>Soft |
| <b>15368</b><br> | <ul style="list-style-type: none"> <li><b>Standard on Model 15360</b></li> <li>Allows for longer reach</li> <li>Grind using wheel surface</li> </ul>                         | 1" x 24"          | 15359<br>70 durometer<br>1" dia. x 1" wide,<br>serrated rubber | None                      |
| <b>15375</b><br> | <ul style="list-style-type: none"> <li>Great for strap polishing</li> </ul>  | 1" x 24"          | 15348<br>70 durometer<br>2" dia. x 1" wide, rubber             | None                      |



# Dynabelter® Accu-Grinder

**Air-Powered Abrasive Belt Tool with Adjust-A-Wheel**



**CONTACT ARMS**  
PAGE 26

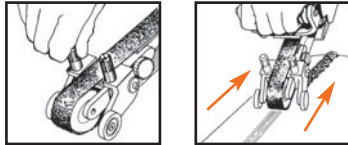
**COUPLER/PLUG**  
PAGE 228

**FOR ABRASIVE BELTS**  
1" wide x 30" long  
(25 mm x 762 mm)  
SEE PAGE 272

*Grinds Welds Flat, Without Undercutting*

## Model 11486 Heavy-Duty, 1.2 hp

- Efficiently removes excess weld material and leaves a narrow "in-line" scratch pattern. This model takes the guesswork out of weld grinding, and prevents undercutting!



- Adjustable guide tires control the depth of abrasive belt cut. Simple twist-knobs adjust depth of cut. Allows controlled grinding on flats, contours and inside/outside of pipes and tanks.
- Includes 11717 Adjust-A-Wheel Contact Arm with 90-durometer standard serrated Contact Wheel, 2" diameter x 1" wide (see page 26).

## Work on Longitudinal Welds:

- I.D. – 12" diameter pipe or larger.
- O.D. – 8" diameter pipe or larger.



Model 11486



*Place 11486 Dynabelter handle at 45° angle from belt housing to increase grinding pressure. Pull tool toward operator for faster material removal.*

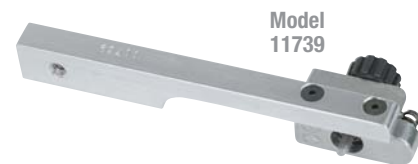
| Model Number | Motor hp (W) | Motor RPM | Sound Level | Abrasive Belt Size Inch (mm) | Max. Air Flow SCFM (L/Min) | Max. SFPM (SM/Min) | Weight Pound (kg) | Length Inch (mm) | Height Inch (mm) |
|--------------|--------------|-----------|-------------|------------------------------|----------------------------|--------------------|-------------------|------------------|------------------|
| 11486        | 1.2 (895)    | 13,000    | 89 dB(A)    | 1 (25) W x 30 (762) L        | 58 (1,643)                 | 4,250 (1,295)      | 9.0 (4.1)         | 22 (559)         | 7 (178)          |

Additional Specifications: Air Inlet Thread 1/2" NPT • Hose I.D. Size 1/2" (13 mm) • Air Pressure 90 PSIG (6.2 Bar)  
Tune-Up Kit: No. 96011 (page 267)

# Dynabelter® Accessories

## 11739 Dynabelter® Adapter

- Dynaflex® Contact Arms (see pg. 11), can be mounted on 11475 and 11476 Dynabelter® models with optional 11739 Adapter.
- Allows for work in small areas using 30" belts (8" reach).



Model 11739

## Dynabelter® Contact Arm Extender

- Allows for longer abrasive belts! The Dynabelter® uses standard 30" long abrasive belts, however, these extenders allow Contact Arms to use longer abrasive belts.
- Extenders can only be used with Dynabelter® Contact Arms.

### 11656 Extender

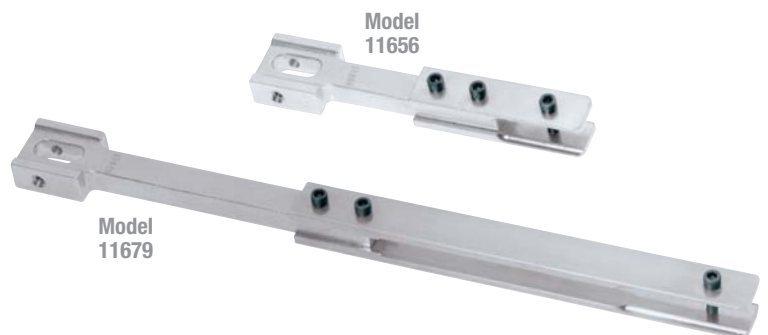
- For 42" belts (13" reach).

### 11657 Extender

- For 54" belts (19" reach).

### 11679 Extender

- For 60" belts (21" reach).



Model 11679

# Dynabelter® Contact Arms

## Variety of Contact Wheels and Wheel Assemblies

• All rubber Contact Wheels are 70 durometer, unless noted.

| Part Number  | Comments   | Belt Size (W x L)          | Contact Wheel Assembly (includes bearing and shaft)   | Platen Pad (see page 29)     |
|--|--|----------------------------|---|------------------------------|
| 11681<br>   | <ul style="list-style-type: none"> <li>• Standard on Models 11475 and 11476</li> <li>• 7-1/2" workable reach</li> <li>• Grind using platen pad</li> </ul>  | 1" x 30"                   | 11650 (Included)<br>70 durometer standard serrated rubber, 2" dia. x 1" wide<br>11618<br>90 durometer standard serrated rubber, 2" dia. x 1" wide   | 11605<br>1" wide;<br>Hard    |
| 11663<br>   | <ul style="list-style-type: none"> <li>• Grind, deburr, polish over platen</li> <li>• 7-1/2 workable reach</li> </ul>  | 1" x 30"                   | 11616<br>80 durometer smooth rubber, 1" dia. x 1" wide  | 11605<br>1" wide;<br>Hard    |
| 11668<br>   | <ul style="list-style-type: none"> <li>• Wheel mount pivots to maintain surface contact</li> <li>• Work on broad areas, blend stainless</li> <li>• Leaves "in-line" scratch pattern</li> <li>• 6" workable reach</li> </ul>  | 1" x 30"                   | 11616<br>Two wheels, 80 durometer smooth rubber, 1" dia. x 1" wide  | 11605<br>1" wide;<br>Hard    |
| 11677<br>  | <ul style="list-style-type: none"> <li>• Grind, blend, polish welds</li> <li>• Strap polish using slack of belt</li> <li>• 7" workable reach</li> </ul>  | 1" x 30"                   | 11620<br>40 durometer smooth rubber, (80 durometer available, 11622)<br>4" dia. x 1"  | None                         |
| 11682<br> | <ul style="list-style-type: none"> <li>• Grind, deburr fillet welds, inside corners</li> <li>• 7" workable reach</li> </ul>  | 1/2" or 1" wide x 30" long | 11638<br>70 durometer radiused rubber, 4" dia. x 1/2" wide  | None                         |
| 11684<br> | <ul style="list-style-type: none"> <li>• Polish contours without gouging workpiece</li> <li>• Ideal for stainless pipe</li> <li>• 7" workable reach</li> </ul>   | 1" x 30"                   | 11642<br>40 durometer serrated rubber, (80 durometer wheel – 11892; 90 durometer wheel – 11888)<br>4" dia. x 5/8" wide  | None                         |
| 11717<br> | <ul style="list-style-type: none"> <li>• For best results when ordering 11717 Contact Arm for Dynabelter Model 11476 add:                             <ul style="list-style-type: none"> <li>- 11544 Pressure Bar</li> <li>- Three 95150 Mounting Screws</li> <li>- 11794 Back Wheel Assembly</li> </ul> </li> </ul> | 1" x 30"                   | 11618<br>90 durometer standard serrated urethane<br>2" dia. x 1" wide   | None                         |
| 11870<br> | <ul style="list-style-type: none"> <li>• Standard on Model 11477</li> <li>• 2" dia. x 2" wide urethane wheel assemblies are only for extra heavy-duty tools</li> <li>• 7" workable reach</li> </ul>  | 2" x 30"                   | 2" dia. x 2" wide rubber assemblies available:<br>11847: (Included) 70 durometer standard serration<br>11849: 70 durometer scoop serration<br>11851: 90 durometer standard serration<br>11853: 90 durometer scoop serration | Optional<br>11659<br>2" wide |

# Dynangle

## Air-Powered Abrasive Belt Tool



CONTACT ARMS  
BELOW

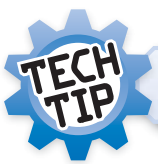
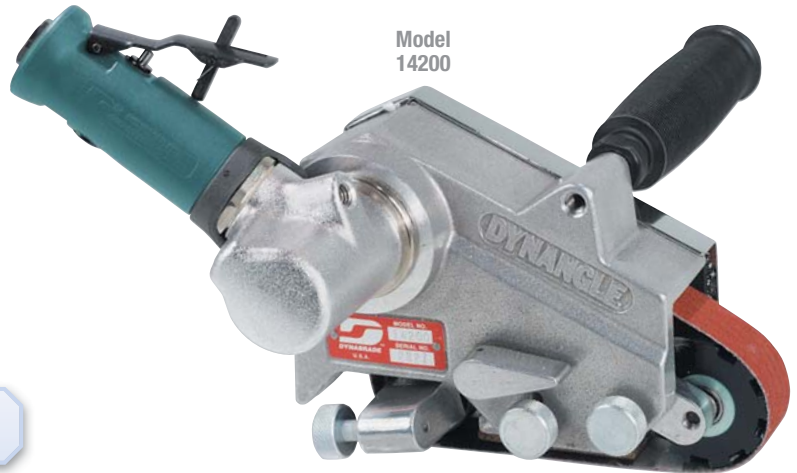
COUPLER/PLUG  
PAGE 228

FOR ABRASIVE BELTS  
1" wide x 18" long  
(25 mm x 457 mm)  
SEE PAGE 272

### Powerful Direct-Drive Air Motor with Adjustable Speed

#### Model 14200

- Compact tool is ideal for work in tight spots; handle is multi-positional. Perfect for blending radiuses and adding grain to stainless steel sinks.
- Quick and easy abrasive belt change. Accepts coated abrasive belts and non-woven nylon belts.
- Interchangeable Contact Arms match specific applications on stainless steel (see below). Also ideal for refinishing drilling screws and pump screws.
- Includes 14266 Contact Arm and 11605 Hard/Cork Dynapad® Platen Pad.


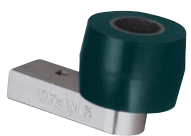
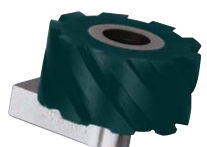


When working on spot welds, lower platen to avoid gouging of work surface with contact wheel.

| Model Number | Motor hp (W) | Motor RPM | Sound Level | Abrasive Belt Size Inch (mm) | Max. Air Flow SCFM (L/Min) | Max. SFPM (SM/Min) | Weight Pound (kg) | Length Inch (mm) | Height Inch (mm) |
|--------------|--------------|-----------|-------------|------------------------------|----------------------------|--------------------|-------------------|------------------|------------------|
| 14200        | .7 (522)     | 20,000    | 92 dB(A)    | 1 (25) W x 18 (457) L        | 36 (1,020)                 | 6,540 (1,987)      | 4.8 (2.2)         | 11 (279)         | 5 (127)          |

Additional Specifications: Air Inlet Thread 1/4" NPT • Hose I.D. Size 3/8" (10 mm) • Air Pressure 90 PSIG (6.2 Bar)  
Tune-Up Kit: No. 95840 (page 267)

## Dynangle Contact Arms

| Part Number  | Belt Size (W x L) | Contact Wheel Assembly (includes bearing and shaft) | Wheel Material        | Surface           | Use                  |
|--|-------------------|---|-----------------------|-------------------|----------------------|
| 14261<br> | 1" x 18"          | 14251<br>1" dia. x 1" wide                          | 70 durometer urethane | Smooth            | 1/2" radiused corner |
| 14263<br> | 1" x 18"          | 14253<br>1-1/2" dia. x 1" wide                      | 70 durometer urethane | Smooth            | 3/4" radiused corner |
| 14266<br> | 1" x 18"          | 14256<br>2" dia. x 1" wide                          | 70 durometer rubber   | Standard serrated | 1" radiused corner   |