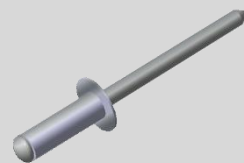
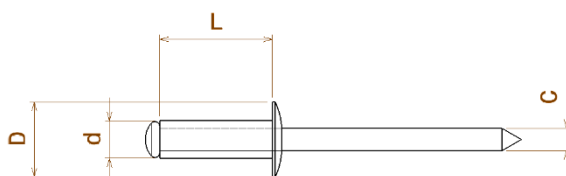


RIVETTI A STRAPPO STANDARD con Testa Tonda – Serie P-STT

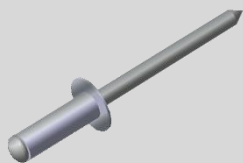


d	L	D	C	e	∅
2,4	5	5	1,43	1,0 ÷ 3,0	2,5
	6			2,0 ÷ 4,0	
	7			3,0 ÷ 5,0	
	8			4,0 ÷ 6,0	
	9			5,0 ÷ 7,0	
	10			6,0 ÷ 8,0	
3	11	6	1,7	7,0 ÷ 9,0	3,1
	12			8,0 ÷ 10,0	
	5			1,0 ÷ 2,5	
	6			2,5 ÷ 3,5	
	7			3,5 ÷ 4,5	
	8			4,0 ÷ 5,5	
	9			5,0 ÷ 6,5	
	10			5,5 ÷ 7,0	
	11			6,0 ÷ 8,0	
	12			7,0 ÷ 9,0	
	14			9,0 ÷ 11,0	
	3,2			16	
18		12,5 ÷ 15,0			
20		14,0 ÷ 17,0			
5		1,0 ÷ 2,5			
6		2,5 ÷ 3,5			
7		3,5 ÷ 4,5			
8		4,0 ÷ 5,5			
9		5,0 ÷ 6,5			
10		5,5 ÷ 7,0			
11		6,5 ÷ 8,0			
3,4	12	7	2	7,0 ÷ 8,5	3,5
	14			8,0 ÷ 10	
	16			10 ÷ 12	
	18			12 ÷ 14	
	20			14 ÷ 16	
	6			1 ÷ 2,5	
	7			2 ÷ 4	
	9			3,5 ÷ 5,5	
4	5	8	2,2	1,0 ÷ 1,5	4,1
	6			1,5 ÷ 3,0	
	7			3,0 ÷ 4,0	
	8			4,0 ÷ 5,0	

d	Alluminio	
2,4	650	450
3	1.000	750
3,2	1.250	900
3,4	1.300	800
4	2.000	1.400
4,8	3.050	2.150
5	3.050	2.150
6	4.000	2.500
6,4	5.000	3.150
8	7.100	5.400



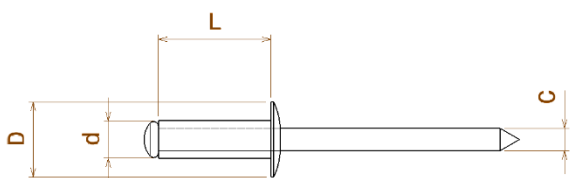
- Corpo ALLUMINIO
- Mandrino ACCIAIO



RIVETTI A STRAPPO STANDARD con Testa Tonda - Serie P-STT

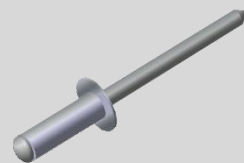
d	Alluminio	
Corpo	Alluminio	
2,4	650	450
3	1.000	750
3,2	1.250	900
3,4	1.300	800
4	2.000	1.400
4,8	3.050	2.150
5	3.050	2.150
6	4.000	2.500
6,4	5.000	3.150
8	7.100	5.400

d	L	D	C	e	∅
4	10	8	2,2	5,0 ÷ 6,5	4,1
	12			6,5 ÷ 8,5	
	14			8,5 ÷ 10,5	
	16			11,0 ÷ 12,5	
	18			12,5 ÷ 14,5	
	20			14,5 ÷ 16,5	
	25			16,5 ÷ 21,5	
	30			24,0 ÷ 26,0	
	35			26,0 ÷ 30,0	
	4,8			6	
7		2,0 ÷ 4,0			
8		3,0 ÷ 4,5			
9		4,0 ÷ 5,0			
10		4,5 ÷ 6,0			
11		5,5 ÷ 7,0			
12		6,0 ÷ 8,0			
14		7,0 ÷ 10,0			
16		8,5 ÷ 12,0			
18		10,5 ÷ 14,0			
20		12,5 ÷ 16,0			
22		16,0 ÷ 17,0			
24		17,0 ÷ 9,0			
26		19,0 ÷ 21,0			
28		21,0 ÷ 23,0			
30		23,0 ÷ 25,0			
35		25,0 ÷ 30,0			
40		30,0 ÷ 35,0			
45		35,0 ÷ 40,0			
50		40,0 ÷ 45,0			
55	45,0 ÷ 48,0				
60	45,0 ÷ 52,0				
65	52,0 ÷ 57,0				
70	57,0 ÷ 62,0				
75	58,0 ÷ 62,0				
80	62,0 ÷ 72,0				
6	8	12	3,5	1,0 ÷ 2,0	6,1
	10			2,0 ÷ 4,0	
	12			4,0 ÷ 6,0	
	15			6,0 ÷ 9,0	
	18			9,0 ÷ 12,0	
	22			12,0 ÷ 16,0	
	26			16,0 ÷ 20,0	
	30			20,0 ÷ 24,0	
	35			24,0 ÷ 29,0	
	40			29,0 ÷ 34,0	



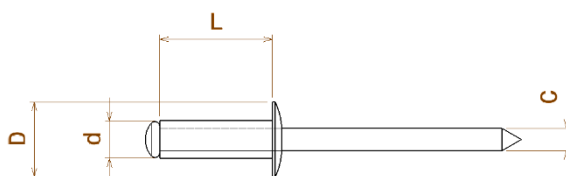
- Corpo ALLUMINIO
- Mandrino ACCIAIO

RIVETTI A STRAPPO STANDARD con Testa Tonda - Serie P-STT



d	L	D	c	e	∅
6,4	8	12	3,5	1,0 ÷ 2,0	6,5
	10			2,0 ÷ 4,0	
	12			4,0 ÷ 6,0	
	15			6,0 ÷ 9,0	
	18			9,0 ÷ 12,0	
	22			12,0 ÷ 16,0	
	26			16,0 ÷ 20,0	
	30			18,0 ÷ 24,0	
	35			24,0 ÷ 29,0	
8	40	14	3,8	29,0 ÷ 34,0	8
	15			4,0 ÷ 9,5	
	18			9,5 ÷ 12,5	
	22			12,5 ÷ 16,5	
	26			16,5 ÷ 20,5	
	30			20,5 ÷ 24,5	
	35			24,5 ÷ 29,5	
40	29,5 ÷ 34,5				

d	Alluminio	
Corpo	Alluminio	
2,4	650	450
3	1.000	750
3,2	1.250	900
3,4	1.300	800
4	2.000	1.400
4,8	3.050	2.150
5	3.050	2.150
6	4.000	2.500
6,4	5.000	3.150
8	7.100	5.400



- Corpo ALLUMINIO
- Mandrino ACCIAIO