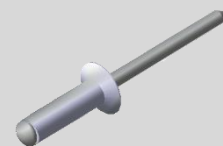
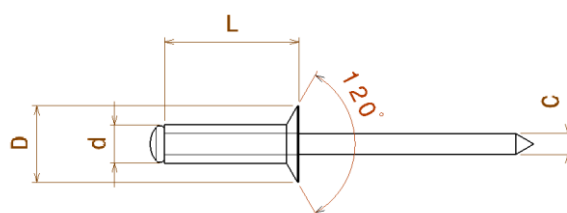


# RIVETTI A STRAPPO STANDARD con Testa Svasata - Serie P-STs



d	L	D	C	e	∅
2,4	6	5	1,3	1,5 ÷ 4,0	2,5
	7			3,0 ÷ 5,0	
	9			5,0 ÷ 7,0	
	11			7,0 ÷ 9,0	
3	6	6	1,7	1,5 ÷ 3,5	3,1
	8			3,5 ÷ 5,5	
	10			5,0 ÷ 7,0	
	12			7,0 ÷ 9,0	
	16			9,0 ÷ 13,0	
3,2	6	6,5	1,8	1,5 ÷ 3,5	3,3
	7			2,5 ÷ 4,5	
	9			4,5 ÷ 6,5	
	11			6,5 ÷ 8,0	
	12			7,0 ÷ 9,0	
	14			8,0 ÷ 10,5	
4	6	8	2,2	1,5 ÷ 3,0	4,1
	7			2,0 ÷ 4,0	
	8			3,0 ÷ 5,0	
	9			4,0 ÷ 5,5	
	10			5,0 ÷ 6,5	
	11			5,5 ÷ 7,5	
	12			6,5 ÷ 8,5	
	14			8,5 ÷ 10,5	
	16			11,0 ÷ 12,5	
	18			12,5 ÷ 14,5	
4,8	7	10	2,6	2,0 ÷ 4,0	5
	9			3,0 ÷ 5,0	
	11			5,0 ÷ 7,0	
	12			6,0 ÷ 8,0	
	14			8,0 ÷ 10,0	
	16			8,0 ÷ 12,0	
	18			10,5 ÷ 14,0	
	20			12,5 ÷ 16,0	

d	Alluminio	
Corpo	Alluminio	
2,4	650	450
3	1.000	750
3,2	1.250	900
3,4	1.300	800
4	2.000	1.400
4,8	3.050	2.150
5	3.050	2.150
6	4.000	2.500
6,4	5.000	3.150
8	7.100	5.400



- Corpo ALLUMINIO
- Mandrino ACCIAIO