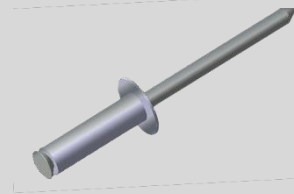
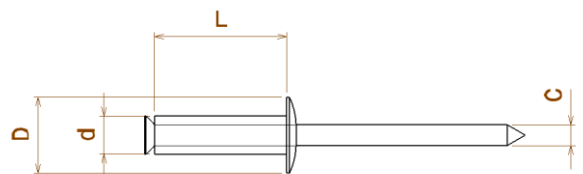


RIVETTI A STRAPPO GRAF con Testa Tonda - Serie P-GTT



d	L	D	C	e	∅
4	8,5	8	2,2	1,5 ÷ 3,0	4,1
	10,3			3,0 ÷ 5,0	
	12,1			5,0 ÷ 6,0	
	13,9			6,0 ÷ 8,0	
	15,7			8,0 ÷ 10,0	
	17,4			10,0 ÷ 11,0	
	19,2			11,0 ÷ 13,0	
	24			14,0 ÷ 18,0	
	26			13,0 ÷ 18,0	
	30			18,0 ÷ 24,0	
4,8	12	10	2,6	2,0 ÷ 6,0	5,3
	16			6,0 ÷ 10,0	
	20			10,0 ÷ 14,0	
	25			14,0 ÷ 18,0	
	30			18,0 ÷ 22,0	
	35			22,0 ÷ 27,0	
	40			27,0 ÷ 32,0	
	45			32,0 ÷ 37,0	
5	11	10	2,7	1,0 ÷ 5,0	5,1
	14,5			5,0 ÷ 7,0	
	18,1			8,0 ÷ 10,0	
	22			10,0 ÷ 15,0	
	26			14,0 ÷ 20,0	
	30			16,0 ÷ 23,0	
	35			23,0 ÷ 28,0	
6,4	18	12	3,5	3,0 ÷ 7,0	7
	22			7,0 ÷ 11,0	
	26			11,0 ÷ 15,0	
	30			15,0 ÷ 20,0	
	35			20,0 ÷ 25,0	
	40			25,0 ÷ 30,0	

d	Alluminio	
Corpo	Alluminio	
2,4	650	450
3	1.000	750
3,2	1.250	900
3,4	1.300	800
4	2.000	1.400
4,8	3.050	2.150
5	3.050	2.150
6	4.000	2.500
6,4	5.000	3.150
8	7.100	5.400



- Corpo ALLUMINIO
- Mandrino ACCIAIO